

CONSOLITE F^RRENSICS

Consolite Forensics is proud to introduce the revolutionary

Consolite CERA

Extracts latent fingerprints from discharged cartridge cases

Generates images not visible in any other way

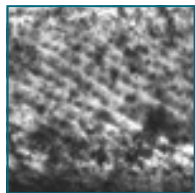
Key Features

- Fingerprints extracted from discharged cartridge cases
 - even where deposits burned off and no visible mark exists
- Uses technology invented by Dr. Bond of Northamptonshire Police
 - proven and patented
- Automated operation
 - minimal training required
- Full range of cartridge sizes accepted
 - no need for reconfiguration
- Fully integrated camera and lighting system
 - seamless image capture
- Sophisticated image processing
 - flat image generated from cartridge surface ready for AFIS input

CERA (Cartridge Electrostatic Recovery and Analysis) uses the remarkable new technique invented by Dr. John Bond of the UK Northamptonshire Police.

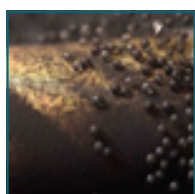
A special powder is applied to the surface of a discharged cartridge case with a high electrostatic potential. Corrosion of the brass surface caused by fingerprint deposits is revealed by attraction of the powder. This can work even though the original deposits may long ago have burned off during firing, and the corrosion may not be visible to the naked eye.





Consolite Forensics has worked in close collaboration with Dr. Bond and his team to develop the technique into a repeatable process. The emphasis is on ease of use, so results are obtained quickly and reliably with minimal operator training.

The Consolite CERA is a desk-top unit for the uniform distribution of powder and the extraction of a useable image.



The system automatically measures the size and shape of the casing and guides the powder delivery process. The operator can control the amount of powder delivered to optimise print quality, and can pause or abort at any time.

Following powder distribution an integrated high resolution camera and lighting system comes into play. Sophisticated image capture and processing software generates a flat image from the entire circumference of the cartridge, suitable for output to AFIS.



Outline Specifications

Approximate Dimensions:	500mm x 500mm x 500mm (20" x 20" x 20")
Approximate Weight:	32 kg (70 lb)
Power Requirement:	90 - 264 AC ,48 - 62Hz
Capacity:	From 0.22" Rimfire to Shotgun, with capacity for 100mm long cases

The product is protected by International Patent Application No. PCT/GB2008/001261 and corresponding applications worldwide, as well as International Patent Application No. PCT/GB2009/002540.

Contact Details

Consolite Forensics
St.Martin's Business Park
Bells Lane, Zeals, Wiltshire
BA12 6LY, United Kingdom

Tel: +44 (0)1747 840900
Fax: +44 (0)1747 841500
E-Mail: forensics@consolite.co.uk
Web: www.consoliteforensics.com